

2004 CornerHouse Staff

Laura Arellano
Administrative Assistant

Jennifer Anderson
Training Director

Sara Blahauvietz
*Child Interview
Specialist/Trainer*

Julie Ellefson
Program Director

Chandra Hall
Video Technician

Amanda Harrington
Program Assistant

Sandy Heitkamp
Training Assistant

Jodi Lashley
Training Coordinator

Sharon McLaughlin
Business Manager

Anne Nuernberg
*Child Interview
Specialist/Trainer*

Amy Russell
Executive Director

Kelly D. Sheehan
*Family Liaison/
Volunteer Coordinator*

Judy Weigman
*Child Interview
Specialist/Trainer*

2004 Consultants

Actors:

Aaron Liebo
Edward Linder
Trudy Monette
Dana Munson
Stacey Poirier
Heather Wilson

Training Faculty:

Susan Carstens
Judy Johnson
Mike Lynch
Mindy Mitnick
Sgt. Kelvin Pulphus
Carol Rennerfeldt
Katy Stesniak
Susan Watchman

Consulting Physicians:

Dr. Jud Reaney
Dr. Linda Thompson

2004 Volunteers

Family Service Volunteers:

Liz Anderson
Carissa Dotseth
Sue Nyberg
Sara Owens

Project Volunteers:

Andrew Brenner
Heather Hlavka
Dr. Ross Macmillan
Sophia Miceli
Elizabeth Rein
Rebecca Schafer
Nuria Sheehan

Event Volunteers:

Twins Fundraiser (31)
Josh Hartnett Movie
Premiere Event (9)
Kind to the Earth
Landscaping (4)

Interns:

Emily Benson
Ryan Parsons
Michele Sadowski

“ We are grateful for the approach CornerHouse takes - especially in making children comfortable. We also appreciated the people we spoke with, everyone was respectful, compassionate and easy to talk with. It helps to know that there are such caring people that work with families in these situations. It certainly eased the pain and stress we were feeling. ”

—Parent

Dear Friends,

Fifteen years ago, Hennepin County professionals started a journey to improve the system's responses to children who may have been sexually abused. Companions on this trip included the Hennepin County Attorney's Office, Hennepin County Child Protection Services, the Minneapolis Police Department, Children's Hospitals and Clinics - Minneapolis, the Hennepin County Medical Center and members of the community.

While this trip has not been without its roadblocks and detours, together we have all moved closer to our destination. We have built strong teams in Hennepin County that respond in a coordinated manner to children who may have been victimized. We share resources and expertise with each other, and work to educate the community on child abuse awareness and prevention.

With an end-goal of reducing trauma, eliciting uncontaminated statements, and achieving more positive outcomes for children and families of alleged sexual abuse and violence, obstacles still lie ahead. However, our travels have seen positive signs and significant mile markers. In our 15-year history, we have provided forensic interview and medical services for more than 8,600 children and vulnerable adults, and have trained over 12,000 professionals in recognizing and responding to child abuse. CornerHouse Board of Directors and paid and volunteer staff members demonstrate full dedication to the CornerHouse mission. In collaboration with our interagency team members and donors we push forward on the road to ending child abuse.

Working together, and overcoming the challenges along the way, we build a stronger community, better systems and supportive outcomes. As we travel down this road, we see the best sign of all:

Caution - Children at play.



Amy Russell
MSEd, NCC, Dip CFC
CornerHouse Executive Director

“ When the doors first opened at CornerHouse, it was virtually an untested concept. Now after 15 years of service to the children of our community and through the hard work of a very dedicated staff, it is recognized as an unequivocal success. No longer are children dragged (almost literally) from a homicide detective’s desk, to a hospital emergency room, to a child protection interview, to the County Attorney’s office. It was a tragic thing that we did back then, and CornerHouse was the solution. ”

—Tom Johnson, CornerHouse Board Chair 1989-1990

CornerHouse is celebrating its 15th Anniversary. I feel privileged to have been a part of its caring for children for 14 of those years. Prior to my being invited to join the Board of Directors in 1998, I helped to initiate and lead a fundraiser with the Minnesota Twins that has become a major source of income for CornerHouse annually. My involvement in this event continues to this day.

Two years ago I was elected to serve as Chairman of the Board and have loved carrying out this duty. Throughout my tenure I have seen a Board that truly enjoys being together and achieving great things. It’s been a true blessing to watch. Attitudes have been positive, very caring and productive.

A couple of the goals during my tenure were to raise awareness of CornerHouse in the community and to build a comfortable relationship between our outstanding staff and our energetic Board. Through renewed Board commitment and leadership, we have rallied together to raise community awareness about child abuse. Thousands of dedicated professionals have developed new skills for assessing children’s trauma and providing a safe place for children to be heard.

In an attempt to enhance relationships between Board and staff members, the Board hosted fourteen noon luncheons for the staff over the last two years. The luncheons provided us with the opportunity to set all business aside and get to know each other as individuals. This support has been warmly received and has been fun for everyone. We begin our next 15 years with no barriers or limits to the things we can accomplish working together.

Arlene Clapp Gumingo

CornerHouse Board Chair 2003-2005

CornerHouse Forensic Services

- ❖ CornerHouse staff conducted 476 forensic interviews of children and vulnerable adults identified as possible victims of sexual abuse or witnesses to violent crime in 2004. Each child's interview was memorialized on videotape, provided as evidentiary material to law enforcement, and archived at CornerHouse for a period of fifteen years.
- ❖ 59 children were provided sexual abuse medical evaluations at CornerHouse as a follow-up service to their forensic interview. Each child's health assessment was facilitated by one of two specially trained physicians on contract with CornerHouse: Dr. Linda Thompson and Dr. Jud Reaney.
- ❖ The Case Review Team process begun in 2003 enjoyed continued growth throughout 2004. Professionals across disciplines engaged in a formal process at 10 monthly meetings to share facts, observations, and make recommendations to enhance the case resolution and outcomes of 47 new cases.
- ❖ Program staff responded to 486 telephone requests for professional support, information and referral, and case consultation during 2004.
- ❖ Clients and caregivers have received additional emotional and community support since the addition of a Family Liaison/Volunteer Coordinator beginning in September, 2003. Caregivers receive support navigating through referral resources and child development issues in light of sexual abuse allegations.
- ❖ CornerHouse saw a leap in technological capability in 2004 as well. Through a grant from the National Children's Alliance, the purchase, training and implementation of a new DV-CAM recording system was accomplished. In addition, new video editing hardware and software were purchased, which provide CornerHouse the ability to edit video clips in-house, for use in its professional training programs.
- ❖ CornerHouse was graciously supported by volunteer gifts of time, creativity, free-will and skill-sharing. Volunteer opportunities included direct service to families, special events and projects, board membership, fund raising, and professional study internships. An estimated 1092 volunteer hours were vested in reaching the CornerHouse mission in 2004.

“ I am the longest standing board member of CornerHouse with one exception. That alone speaks for my enjoyment as a member of the board. CornerHouse has a mission very worth working for, and a staff unparalleled in talent and commitment. I have learned much working with public office officials and private corporation staff. Issues discussed at board meetings are well thought out and helpful to CornerHouse services. I am looking forward to another 17 years on the CornerHouse board. ”

—Mace Goldfarb, M.D., CornerHouse Board Chair 1994-1997

“ The years that I was a board member and later Chair of the Board of Directors of CornerHouse were the most rewarding times of my law enforcement career. I have never before or since been a participant in an effort that brought together law enforcement leaders, elected leaders, prominent business persons, medical doctors, and social services persons in such a meaningful way.

The concept and practice of one interview for children who are alleged victims of physical and sexual abuse during the investigative and legal process by professionals is wonderful. The children are interviewed by caring, sensitive CornerHouse people. The various interests are satisfied and the child is not forced to relive the event(s) over and over.

I must add that I am in awe of the interviewers and doctors of CornerHouse. I have seen and spoken to only a relatively few child victims in my career. They have affected me deeply. I am certain it is deep commitment to the children and professionalism that allows CornerHouse to continue.”

—Allen Garber, CornerHouse Board Chair 1997-1999

“ I was keenly aware of the safe and peaceful atmosphere at CornerHouse. The people who have organized this place have genuinely catered to the child, who is the most innocent victim that society has. Thank you for such a place! ”

—Parent

CornerHouse Training Services


- ❖ In 2004, CornerHouse trained a total of 2508 child abuse professionals and mandated reporters in the United States, Uruguay, and Kosovo.
- ❖ 686 law enforcement and child protection professionals, prosecuting attorneys, forensic interviewers, other child abuse professionals and mandated reporters furthered their skills through participation in the following CornerHouse training courses:
 - Child Sexual Abuse Forensic Interview Training
 - On-Site Child Sexual Abuse Forensic Interview Training
 - Advanced Child Sexual Abuse Forensic Interview Training
 - On-Site Advanced Child Sexual Abuse Forensic Interview Training
 - Child Sexual Abuse Mandated Reporter Training
 - Orientation Training
- ❖ Approximately 1702 other professionals were trained *in addition* to the above-mentioned core training programs. CornerHouse trainers were honored to present at 28 special request training sessions including lectures at several prestigious national conferences.
- ❖ Through a partnership with the American Prosecutors Research Institute (APRI), CornerHouse has developed a model curriculum for a five-day forensic interview course based upon the CornerHouse forensic interview protocol. The CornerHouse protocol promotes a coordinated system response to child abuse and elicits statements from children in a way that is developmentally appropriate, non-leading, and ensures the rights of the accused. Due to the tremendous need for this training, CornerHouse and APRI have worked intensively with faculty and administrators from across the nation to establish their own locally-run forensic interviewing courses based on this curriculum. Since the inception of this train-the-trainer program in 2001, CornerHouse has mentored ten states through this process.

“ [The] course was very enlightening and showed how to interview as opposed to interrogate. Made me realize that as a police officer that I would too often tend to interrogate the child. More officers need this training. ”

—Police Officer

Train a Community

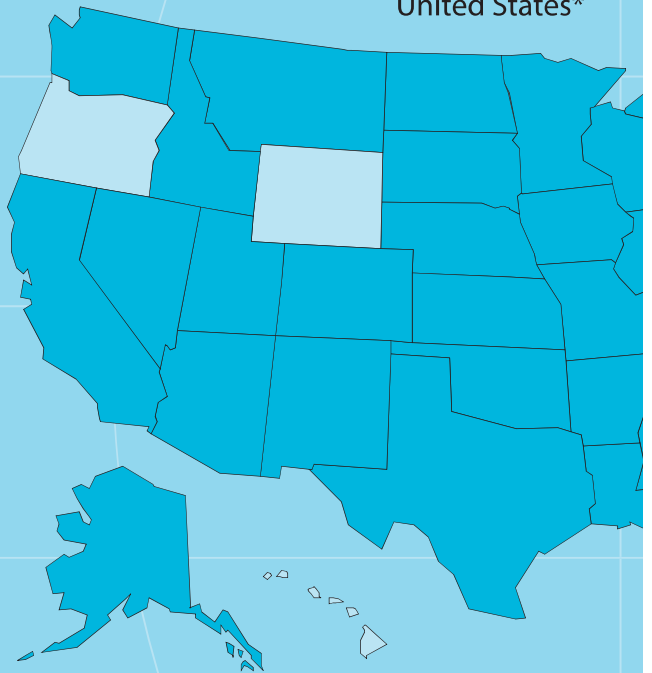
Teach *Professionals* • Listen

 = Area

South America (Uruguay)*



United States*



Number of Professionals Trained:	12,000
Number of MN Counties Instructed:	87
Number of States Educated:	45
Number of Countries Impacted:	4
Number of Children Protected:	Limitless

*Maps are not shown actual size

y: End Child Abuse

to Children • **Protect** our Future

s of Training

Canada (Saskatchewan)*

Europe (Kosovo)*



Training Professionals Around the World
Interagency Child Abuse Evaluation and Training Center 2502 10th Avenue South Minneapolis, MN 612-813-8300

2004 Donors

Grants

Minnesota Office of
Justice Programs
National Children's Alliance

Foundations

The Joshua D. Hartnett
Foundation of The Saint
Paul Foundation
Park Nicollet Foundation
E.M. Pearson Foundation
Piper Family Fund of The
Minneapolis Foundation
Ryan Foundation

CornerHouse Champions for Children (\$10,000 to \$24,999)

Northmarq Capital

CornerHouse Champions for Children (\$5,000 to \$9,999)

Divine Swine Catering
General Mills Foundation
McGann Associates
Charitable Gift Fund
Opus Foundation
Opus Northwest, L.L.C.
Standard Parking
Straightline Striping

CornerHouse Champions for Children (\$1,000 to \$4,999)

ABM Janitorial Service
Amano Cincinnati, Inc.
CoreNet Global
Equity Office Properties
Jim Heller
Hopf + Hopf Printing, Inc.
Margaret H. & James E. Kelley
Foundation, Inc.
Ken Green Studio
Kraus-Anderson Construction
Company
Land America Commonwealth
Midwest Resorts
Minnesota Real Estate Journal
Minnesota Twins
Ed & Susanne Padilla
Partners in Travel
The Back Door
United Properties
Dr. Steven Vecker
Wayzata Community Church
Women's Fellowship

Patrons (\$500 to \$999)

American Commercial
Security Services
Anderson Builders
Mike & Christine Bauerschmidt
Bergstrom
Michael & Sara Clough

Jay Cook & Karen Rye
Commonwealth Land Title Ins. Co.
Contract Hardware Co., Inc.
Dorsey & Whitney Foundation
Becky Mallory Finnigan
Douglas & Lisa Gervais
Gregory Herrick
Edward & Susan Hurley
Judy & Scott Ziemkowski
Larry Pobuda
Lori Larson
Elizabeth Myhre
Damon Noga
Northern Harvest
Our Lady of Grace Parent
School Organization
The Colonnade & 601 Tower at
Carlson Center
Toni Reichow
Trammell Crow Company
U.S. Bank National Association
Wells Operating Partnership
Welsh Companies

Supporters (\$250 to \$499)

ABM Janitorial
Joann Allen
Robert Anderson
Anonymous
APEX Asset Management Corp.
Art Holdings
AWIN Management, Inc.
BDH & Young Space Design
Belgarde Enterprises
Binswanger, CBB
Borton Volvo, Inc.
Steve Brehm
Briggs & Morgan, P.A.
Brookfield Properties
Robert Burck
Steven Buss
Paul Cairns
Cambridge Commercial Realty Inc.
CB Richard Ellis, Inc.
CCIM
Chicago Title Insurance Company
Steve & Susan Chirhart
Cobb Strecker Dunphy &
Zimmermann, Inc.
Colliers Turley Martin Tucker
Columbia Building Services
Commercial Construction
Partners, Inc.
Commercial Partners Title
Commonwealth Land Title Ins. Co.
CSM Corporation
Diversified Real Estate Services, Inc.
Dorsey & Whitney LLP
Dougherty Funding
Duke Construction LP
Ecolab
Julie Ellefson
Ellerbe Becket
Elness Swenson Graham Architects
Escom Properties, Inc.
Excel Bank
Faegre & Benson LLP
Edward Farr Architects, Inc.

Suzanne Fedoruk
Felhaber Larson Fenlon &
Vogt, LLC
Dennis & Karen Fenster
First American Title
Insurance Company
First Industrial Realty Trust, Inc.
Michael Fleetham
Rod & Carrie Fordahl
Fox Sports Net
Glaser Financial Group
Patrick & Susan Gleason
GMAC Commercial Mortgage
Gray, Plant, Mooty, Mooty &
Bennett, P.A.
Great Clips, Inc.
Grubb & Ellis/Northco
Estate Services
Arlene Clapp Gumingo &
Charles Gumingo
HARVARD Maintance, Inc.
Hay Dobbs, P.A.
Heitman Financial Services, LTD
Hempel Properties, Inc.
Thomas & Kristin Holtz
Leo & Pamela Hopf
Howalt-McDowell Insurance, Inc.
Steve & Michelle Hoyt
Hoyt Properties, Inc.
Hudson Baking Company
Hutchinson Technology
Incorporated
Interstate Partners
Laurie & Nestor Jaramillo
Jeffrey Jewelry
Juut Salonspa
Kennedy Wilson Minnesota
Management
KKE Architects, Inc.
Nick & Jodeen Kozlak
Krass Monroe, P.A.
Kraus Anderson Real Estate
Anne Kreiser
Tom Lander
LaSalle Bank
LeMeridian - Minneapolis
Leonard, Street & Deinard
Liesch Associates, Inc.
Mackall, Crouse & Moore
Attorneys at Law
Madison Marquette Realty Services
Maertens-Brenny Construction Co.
Mahtomedi Senior High
Marlyce Turnbull
Marquette Plaza
Mars Carpet Sales
Marsden Building Maintenance,
L.L.C.
Richard & Carole Martens
Maslon Edelman Borman & Brand
McGladrey & Pullen, LLP
McGough Construction
L. J. Melody & Company
Meritex Enterprises, Inc.
Miller Johnson Steichen
Kinnard, Inc.
Minnesota Twins

Mohagen Hansen Architectural Group, LTD
 Mortenson Development, Inc.
 Moss & Barnett
 MP Johnson Construction
 Neiman Marcus
 Nelson, Tietz & Hoyer
 Northern Harvest
 John & Nancy O'Shea
 Parents in Community Action
 Park Midwest LLC
 Parsons Electric
 Professional Turf, Inc.
 RJF Agencies
 Robins, Kaplan, Miller & Ciresi LLP
 Roseville Properties
 RREEF Management Co.
 Amy & Steve Russell
 Nancy Sabin
 Ronni & Milice Saxon/ALC Financial Corp
 SchaferRichardson, Inc.
 Shenhon Company
 Sonus Interiors, Inc.
 St. Paul Hotel
 St. Paul Jeweler
 Steelcase
 Steiner Development, Inc.
 Stonewood Properties, Inc.
 TCF National Bank Minnesota
 The Bainey Group, Inc.
 The Depot
 The Heskin Group
 The Marshall Group
 TNC Industries, Inc.
 Torrini Decorating
 Trizec Holdings, Inc.
 U.S. Bank/Commercial Real Estate
 United Health Group
 Venture Mortgage Corporation
 Veritas
 Steven & Kelly Walter
 Wells Fargo Bank, NA.
 Witcher Construction Company
 ZE Xiong
 Zeller Management Corporation

Friends (\$1 to \$249)

Arlin Alverado
 Anonymous
 Architectural Alliance
 Karla Arends
 Avant
 Aveda
 Judith Baker
 James & Toni Beitz
 Sara Blahauvietz
 Block E Games Works
 Russell & Sarah Bode
 Sue & Dick Bonin
 Capital Grille
 Alysha Carlson
 Carlson Real Estate Company
 CenterPoint
 Stuart Chazin
 Cold Stone Creamery
 Commercial Financing Resources, Inc.

Copeland's
 Lauren Cork
 Dallas Cowboys
 Jonathan & Jennifer Doane
 Stephanie Erstrom
 ESP Systems Professionals
 Lloyd & Doris Frank
 Thomas & Leslie Frost
 Garfield Clark & Assoc.
 Jason Getter
 Sandra Gilbert
 Mace Goldfarb
 Goodfellows
 Jolene Halldorson
 Hard Rock Café
 Amanda Harrington
 Ed Harrington
 Karen Harris
 Michael & Colleen Heck
 Sandra Heitkamp
 Hennepin Theatre Trust
 Jim Hennessy
 Tom Herzberg
 Historic Theatre Group
 Kathleen Hughes-Kuda
 Hyatt Regency - Minneapolis
 Tom Jensen
 Ted Jessen
 Jerome & Karen Johnson
 Jones Lang LaSalle
 Kincaids
 Amy Klobuchar
 Linda Koblick
 Arthur & Margaret Kremer
 Christine Kurtz
 Larson Family
 Lonnie & Lori Larson
 Jodi Lashley
 John Laux
 Sharon & James Lewis
 Randy & Chri Longsdorf
 Robert Lunz
 William Lunz
 Mike Lynch
 Lyons' Pub
 Mac & Mac, Inc.
 Madden's on Gull Lake
 Marriot City Center
 Jane Marrone
 McCormick & Schmicks
 Patrick McDonnell
 Dan & Sharon McLaughlin
 Gregg Mellang
 Merit Electric Company
 Meritex
 Miami Dolphins
 Minnesota Shopping Center Association
 Minnesota Timberwolves
 Minnesota Wild
 Joyce Miyamoto
 Ben Mortensen
 Morton's
 Murray's
 Needels Supply
 John & Pamela Neunsinger
 Nicollet Partners
 Jodi & Kim Nyberg

Olive Garden
 Sara Owens
 Palomino Euro Bistro
 Pazzaluna-Urban Trattoria & Bar
 Peters Billiards
 Polaris
 Heather Pollard
 Mary Annette Quinnell
 Radisson City Center Hotel - St. Paul
 Radisson Riverfront Hotel
 RDG Chicago
 Sgt. Tami Reece
 Joy Rikala
 RSP Architects, LTD
 Margaret Schatz
 John & Barbara Schmick
 Science Museum of Minnesota
 Angela Scott
 Susan Segal & Myron Frans
 Kelly & Nuria Sheehan
 Amanda Sieling
 Andrea Smith
 Spalon Montage
 Sara Stafford
 Larry Stephenson & Allison Thiel
 Tamara Stirens
 Summit Brewery
 Lynsey Sutton
 TGI Fridays
 Tammy Thompson
 The Bibelot Shop
 The Guthrie Theatre
 The Oceanaire
 Theatre in the Round
 Theatre Unbound
 Triple Espresso LLC
 Tri-Star Management, Inc.
 University of Minnesota
 Janice Unstad
 E. Leanne & Lowell VanBerkom
 Vision Landscape, Inc.
 West Cebtral Insulation, Inc.
 Wexford Financial, Inc.
 White Way Cleaners
 Margot Willett
 Dana Woodford

Memorials or Tributes

Morris & Karen Davidman
 in Honor of Mace Goldfarb

In Kind Donations

Bellanotte
 Children's Hospitals & Clinics
 CLX Systems/Westwood Management, Inc.
 Crown Theater
 Divine Swine Catering
 Dorsey & Whitney LLP
 Equity Office
 Lakeshore Entertainment
 Lands' End
 Manhattan Toys
 MGM
 Party City

CornerHouse Financial Information

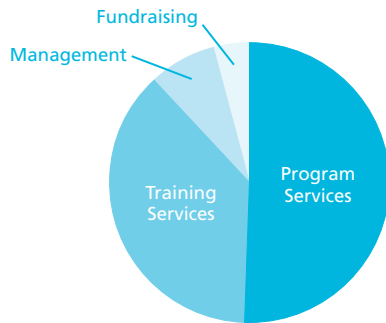
REVENUE

Program Contracts	\$456,792
Foundations & Donations	\$342,797
Training Contracts	\$336,818
Other Revenue	\$2,382
Total Revenue	\$1,138,789



EXPENSES

Program Services	\$502,271
Training Services	\$370,352
Management	\$76,808
Fundraising	\$39,820
Total Expenses	\$989,251



“ As a founding board member of CornerHouse, I have been very impressed with the quality of service and the leadership shown by board and staff in the area of children’s issues. The operation started in an unwanted building with a newly formed board and a couple of staff members. From these humble beginnings has emerged an organization that is recognized internationally for its ability to establish trend-setting protocols and a sought after training program.

Five years ago the National Children’s Alliance approached the three established programs in the state with the hopes of forming a Minnesota chapter. This collaborative effort was formally recognized in October 2000 as the Minnesota chapter held its first official meeting. CornerHouse has set the industry standard as to how issues involving child sexual abuse should be addressed. CornerHouse continues to intervene in the lives of sexually abused children in ways that offer them a better future. ”

—John Laux, CornerHouse Board Chair 1990-1994

2004 CornerHouse Board of Directors

Arlene Clapp Gumingo, *Chair*
Tom Frost, *Vice Chair/Chair Elect*
Ed Padilla, *Treasurer*

Judy Baker, *Secretary*
Jay Cook, *Past Chair*



Robert Burck
Ike de Lugo
Suzanne Fedoruk
Alan Goldbloom, MD
Mace Goldfarb, MD
Josh Hartnett
Deb Huskins
Amy Klobuchar
Linda Koblick
Lori Larson
John Laux
Linda Ledray

Robert Lilligren
Pat McDonnell
William McManus
Elizabeth Myhre
Damon Noga
Larry Pobuda
Joy Rikala
R. T. Rybak
Jeff Spartz
Jan Unstad
Suzanne Zuidema

Special Acknowledgments

Regrettably, two former Board Chairpersons were not able to include their comments in this report. **Mary Tambornino** chaired the CornerHouse Board from 1999 – 2001. **Jay Cook** served in this capacity from 2001 – 2003. Thank you to all CornerHouse Board members for their dedication and hard work on behalf of the children CornerHouse serves. The longevity of the Board, and their continued commitment to the mission and services CornerHouse provides are remarkable.

In 2002, Minnesota native and film actor **Josh Hartnett** became involved with CornerHouse. Since then, Josh has helped CornerHouse raise both funds and awareness for our vital services to children and families who may have experienced violence. In recognition of these very important contributions to the work accomplished at CornerHouse, Josh accepted an invitation to serve as an Honorary Board Member of CornerHouse. In addition, Josh was awarded CornerHouse's "SweetHearts for Kids Award" for hosting a fundraising event with the release of his film *Wicker Park*. This is the second benefit film premiere Josh has hosted on behalf of CornerHouse. We thank Josh for his involvement and commitment to children.

As CornerHouse commemorates fifteen years of serving the community, the Twins Cities Real Estate Professionals have sponsored thirteen CornerHouse fundraisers with the Minnesota Twins. The first event, held in 1991, raised \$5,000. Over the years this amount has increased, raising over \$100,000 in 2004. Thousands of volunteer hours have gone into making this event a great success each year. The auctions, door prizes, music, picnic and baseball game all offer a festive atmosphere while providing vital funds for CornerHouse.